



ALASKA DIVISION OF HOMELAND SECURITY & EMERGENCY MANAGEMENT



Daily Situation Report 26-012 • January 12, 2026

Toll-Free 1.800.478.2337

Anchorage Area 907.428.7000

SEOC 907.428.7100

<u>SEOC Preparedness Level</u> Level 2-Heightened Awareness	http://ready.alaska.gov	<u>Alaska Military Installation Force</u> <u>Protection Level:</u> FPCON Bravo
<u>NTAS Bulletin</u> There are no current advisories https://www.dhs.gov/national-terrorism-advisory-system	<u>Maritime Security (MARSEC)</u> Level:1 Minimum Appropriate Security Measures	

(Significant changes from previous situation reports are red.)

Significant Issues:

2026 January Southeast Winter Storm Disaster

Juneau – SEOC Division supervisor remains deployed in Juneau, coordinating with CBJ and T&H leadership to ensure community needs are met given increased snow, rain and avalanche concerns.

The SEOC received damage reports from Skagway and Gustavus from the unprecedented snow fall and will be surveying communities in the State declaration area for damages and impacts throughout the coming days.

North Slope Borough, ICAS, Anaktuvuk Pass

The SEOC received a local disaster declaration over the weekend regarding critical fuel shortages in Anaktuvik Pass resulting from extreme weather prohibiting fuel delivery by plane.

Quinhagak Power Disruption

The SEOC is working with community leaders to address life-safety concerns in the community during a significant cold weather period and a power disruption. Residents without power sheltered in the school for heat while temperatures were more than 50 below zero. The SEOC is working with AVEC, LKSD, ADEC, and community leaders to address life-safety concerns.

Joint Preliminary Damage Assessment: Napaskiak and Mat-Su Borough

DHS&EM Operations and Disaster Recovery personnel will be engaged with FEMA to establish the scope of damage in the two above-mentioned areas throughout the next two weeks.

Division of Homeland Security and Emergency Management Public Information:

For current press releases, see: <https://ready.alaska.gov/PublicInformation/PressReleases>

Department of Health (DOH):

For current information, see: <https://health.alaska.gov/en/>

Travel Alerts and Conditions:

Visibility down to 0 at times between the Chandalar shelf and top of Atigun pass mi 235-245, windchill 70 below zero.

For current driving conditions, dial 511 or visit: <https://511.alaska.gov/>

Barry Arm Landslide / Tsunami Risk:

For the latest information on the Barry Arm Landslide and Tsunami risk, click here: <https://dggs.alaska.gov/hazards/barry-arm-landslide.html>

Earthquakes:

United States Geological Service (USGS) Earthquake Information:

<https://www.usgs.gov/programs/earthquake-hazards>

National Tsunami Warning Center: <https://tsunami.gov/>

Alaska Volcanoes:

Great Sitkin Alert Level: **Watch** and Aviation Color Code: **Orange**

Shishaldin Alert Level: **Advisory** and Aviation Color Code: **Yellow**

For Alaska Volcano updates, go to: <https://www.avo.alaska.edu/>

Air Quality Index (AQI) Advisories:

No active advisories/episodes currently in effect

For the most up-to-date Air Quality Index Advisories:

<https://dec.alaska.gov/Applications/Air/airtoolsweb/Advisories>

Spills of Oil and Hazardous Substances:

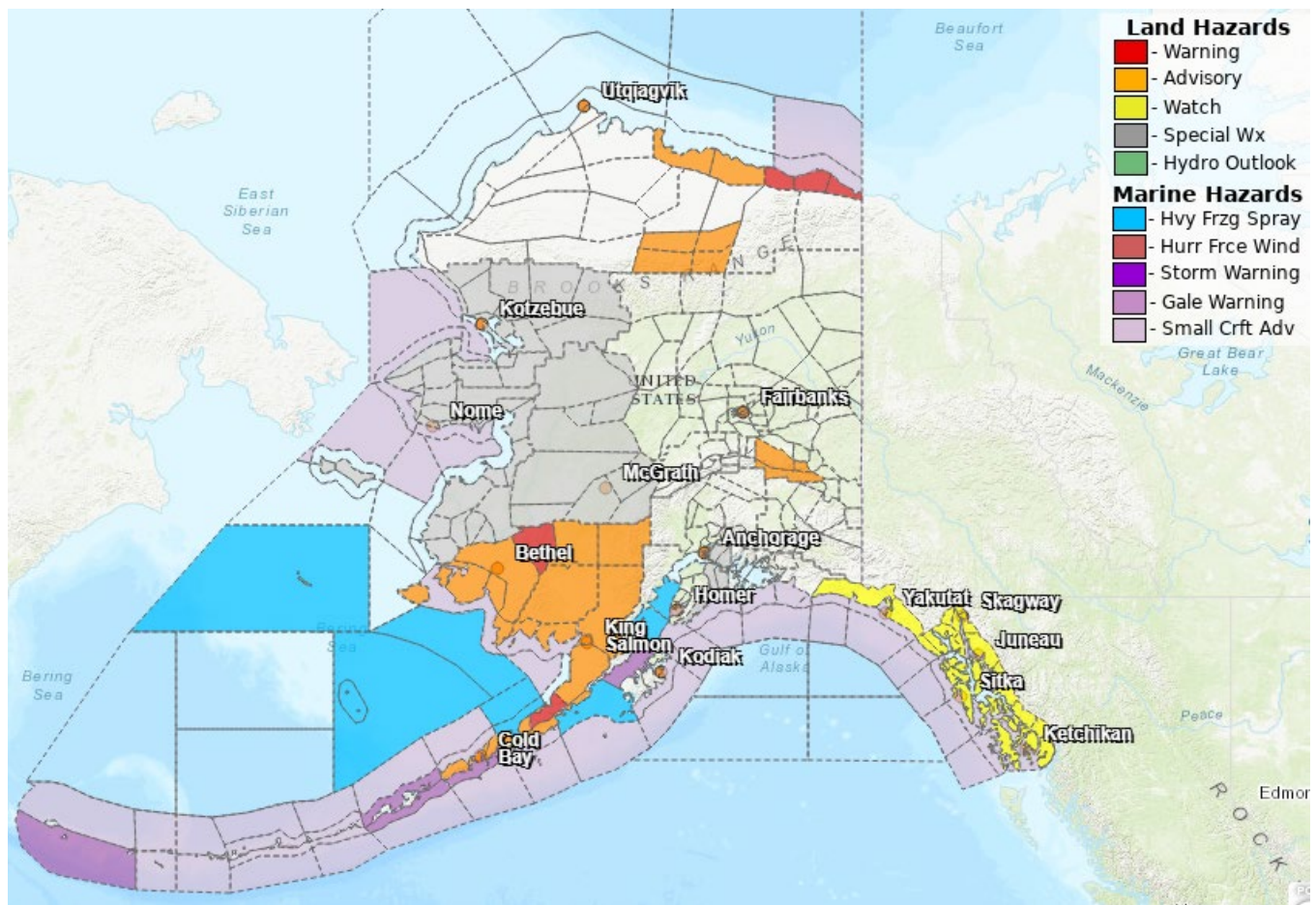
The Alaska Division of Environmental Conservation (ADEC) Spill Prevention and Response page is located at: <https://dec.alaska.gov/spar/ppr/spill-information/response/>

Alaska Cyber Security Information:

State Employees may sign up for cybersecurity notifications and alerts at:

<https://oit-int.alaska.gov/security/>

Significant Weather:



Central and Eastern Beaufort Sea Coast – Blizzard Warning until 9AM Tuesday, Cold Weather Advisory (windchill as low as 70 below) until 4PM today.

Central Brooks Range, Atigun and Anaktuvuk Passes – Cold Weather Advisory (windchill as low as 70 below) until 4PM today.

Northwest Arctic Borough, Kotzebue Sound, Selawik, inland to Western Interior – very cold temperatures likely to begin next week, approaching 40 below zero by Tuesday morning.

Eastern Alaska Range – Winter Weather Advisory in effect until 3PM Tuesday.

Kuskokwim Delta Coast, Nunivak Island, through Northern Bristol Bay Coast to Central and Southern Alaska Peninsula Coast, inland along the Kuskokwim valley to Lime Village – Extreme Cold Warning, Cold Weather Advisory – until 6PM Thursday. Very cold weather impacting much of the southwest areas of the state.

Yakutat through Ketchikan – High Wind Watch, Tuesday evening through Wednesday evening. South to southeast winds with gusts in 60-65mph possible.

Skagway, Klondike Highway above 2500 feet – Winter Storm Watch in effect Tuesday afternoon through Wednesday morning.

Southern Panhandle – Special Weather Statement: Another period of heavy rain for Tuesday into Tuesday night bringing 1 to 3 inches with gusty winds.

Ketchikan, Ward Lake – Flood Advisory in effect until 6PM today.

For more information, go to <https://www.weather.gov/arh>

Avalanche Conditions:



Hatcher Pass – Moderate above 3,500'; Moderate below 2,500'; Low below 2,500'

Chugach State Park – **Special Avalanche Bulletin available [here](#) (Anc to Seward)**

Turnagain Pass and Girdwood – Considerable above 2,500'; Considerable above 1,000'; Considerable below 1,000';

Summit Lake – Considerable above 2,500'; Considerable above 1,000'; Considerable below 1,000';

Seward and Lost Lake Considerable above 2,500'; Considerable above 1,000'; Considerable below 1,000';

Valdez:

Maritime – Considerable at all elevations

Intermountain – Considerable at all elevations

Continental – Considerable at all elevations

Haines: Chilkat Pass, Transitional, Lutak – **High at all elevations**

Juneau: Douglas Island – Considerable at all elevations

For more information and the most current avalanche conditions, go to <https://alaskasnow.org>

The Next Situation Report will be on **January 13, 2026**. A significant change in situation or threat level will prompt an interim report. This report is posted on the internet at <https://ready.alaska.gov/sitrep>.

To register for email distribution, go to: <http://list.state.ak.us/mailman/listinfo/dhsem.situation.report>. Direct questions regarding this report to the SEOC at 907-428-7100 or seoc@alaska.gov.